

Berland

S u p p l y

Berland Supply 87 Healy Rd Cold Spring, NY 10516

NATURAL STONE PAVERS



DIMENSIONS AND WEIGHT

PAVER SIZE AND THICKNESS

ACTUAL	MINIMUM	MAXIMUM
11-3/4" x 11-3/4"	1-1/2"	2 1/2"
11-3/4" x 23-1/2"	1-1/2"	2 1/2"
11-3/4" x 36"	1-1/2"	2 1/2"
12" x 36"	1-1/2"	2 1/2"
14-1/2" x 14-1/2"	1-1/2"	2 1/2"
14-5/8" x 29-5/8"	1-1/2"	2 1/2"
15-3/4" x 15-3/4"	1-1/2"	2 1/2"
15-3/4" x 23-5/8"	1-1/2"	2 1/2"
17-5/8" x 17-5/8"	1-1/2"	2 1/2"
17-5/8" x 35-3/8"	1-1/2"	2 1/2"
18" x 18"	1-1/2"	2 1/2"
17-5/8" x 23-1/2"	1-1/2"	2 1/2"
23-1/2" x 23-1/2"	1-1/2"	2 1/2"
23-3/4" x 23-3/4"	1-1/2"	2 1/2"
23-7/8" x 23-7/8"	1-1/2"	2 1/2"
24" x 24"	1-1/2"	2 1/2"
23-1/2" x 29-1/2"	1-1/2"	2 1/2"
23-1/2" x 35-3/8"	1-1/2"	2 1/2"
29-1/2" x 29-1/2"	1-1/2"	2 1/2"
29-3/4" x 29-3/4"	1-1/2"	2 1/2"
35-1/2" x 35-1/2"	1-1/2"	2 1/2"

WEIGHT

1 1/2" = 22.5 LBS PSF		
2" = 30 LBS PSF		
2 1/2" = 37.5 LBS PSF		

BERLAND NATURAL STONE PAVER BENEFITS

- Its natural beauty has been used since the dawn of time and adds elegance to your property as it radiates a stylish and classy look.
- Natural stone flooring is timeless and not effected by fashion trends.
- Every piece of stone floor is unique and never identical. Each stone tile has special veining, colouring, and natural characteristics, creating a timeless floor covering.

STONE COLORS AND SPECIFICATIONS



Wenge

Testing

Water Absorption: 0.46 %
Compressive Strength: 110.5 Mpa
Density: 2550 kg/m³
Flexural Strength: 8.4 Mpa



Smoke Grey Granite

Testing

Water Absorption: 0.19 - 0.36 weight %
Compressive Strength: 174.8 MPa
Density: 2630 kg/m³
Flexural Strength: 15.3 - 17.8 MPa



Bluestone

Testing

Water Absorption: 1.1 By weight %
Compressive Strength: 137.2 - 210.0 MPa
Density: 2690 - 2720 Kg/m³
Flexural Strength: 17.7 - 21.7 MPa



Absolute Black Brushed

Testing

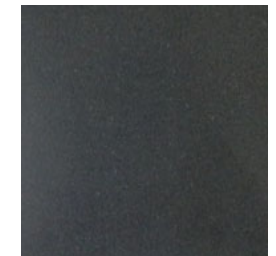
Water Absorption: 0.03 %
Compressive Strength: 290.4 MPa
Density: 3040 kg/m³
Flexural Strength: 35.5 MPa



Absolute Black Honed

Testing

Water Absorption: 0.03 %
Compressive Strength: 290.4 MPa
Density: 3040 kg/m³
Flexural Strength: 35.5 MPa



Basalt

Testing

Density ASTM C97 175.8 lbs./ft³
Water Absorption ASTM C97 0.32%
Compressive Strength ASTM C170
Modulus of Rupture ASTM C99 3740 psi,



Eastern Cream

Testing

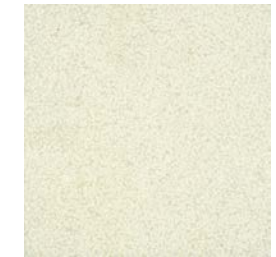
Water Absorption: 3.78 % wt (ASTM C-97)
Compressive Strength: 843MPa-ASTM C-
Density: 2331 Kgr/m³ (ASTMC-97)
Flexural Strength: 137 MPa (ASTM C-99)



Valders

Testing

Water Absorption: .75 of 1%
Compressive Strength: (ASTM C-170)
Density: 165 lbs per cu ft (ASTMC-97)
Flexural Strength: 1669 psi (ASTM C-99)



Valders Dove

Testing

Water Absorption: .75 of 1%
Compressive Strength: (ASTM C-170)
Density: 165 lbs per cu ft (ASTMC-97)
Flexural Strength: 1669 psi (ASTM C-99)